



# Company Profile



1  
2  
3  
4  
5  
6  
7  
8



Company  
Profile

company profile  
**index**



**15. HISTORY**  
17. Company timeline  
19. NEW PRODUCTION  
**21. MOHM IDEOLOGY**  
23. Our team



27. NEW PRODUCTS  
**29. MOHM LAB**



**32. DESIGNERS**



37. Mohm Factories  
39. PRODUCTION FACILITIES  
**41. MATERIALS AND RAW MATERIALS**  
42. Iso Certified and Eco Friendly



47. LOGISTICS & FLEET  
**49. DISTRIBUTION SYSTEM**



**53. HEADOFFICES**  
55. Showrooms  
57. NEW CAIRO CONCEPT STORE



**61. COMMUNICATION AND EVENTS**



65. References

# Chairman's introduction



## WELCOME TO MOHM

Welcome to Mohm.

Having a legacy of 40 years of Industry, believing in Egypt and in Egyptian industry. Relying on innovation to design and develop our products, racing up for technology, having the passion for furniture, willing to work hard to produce a "Made in Egypt" product to invade and conquer the global market. Compromising is unacceptable to our hard core standards.

Developing our team to be one positive family is what really Mohm is about.

Our customers are our partners in success, which is why it is always a long term relationship that is built on trust, respect, and care. At Mohm, we do this, by creating products that meet the expectations and aspirations of customers who share the same values as we do.

Sincerely,

**Eng. Eslam Abdel Hady**

**Chairman**

# A WORD FROM THE CEO



## IN MOHM

In Mohm, we live up to a new challenge every day and it is my strong belief that the success of any organization depends on its capability to acquire the right talents on all ranks. Despite being in a diverse environment, we could establish a harmonious team of workers, employees, engineers and architects to work together to achieve the company's three-dimensional strategy: Design, Build and Value, with the customer always being in the focus of each.

Corporate offices has morphed dramatically in the last decade in Egypt, therefore, we foster a design concept that puts Mohm on the forefront of all design and color trends, yet we hold onto the uncompromised quality and overall value of our products. I am confident that with our team of 1,000 members, Mohm will keep an advanced position in the local and regional markets and with serious endeavors to reach out to the international market.

Sincerely,  
**Eng. Shereef Abdelhady**  
CEO

company profile

# company

## **HISTORY**

CRAFTING INNOVATION SINCE 1974

## **Company timeline**

BUILDING BLOCKS TO STYLE

## NEW PRODUCTION

**NEXT GENERATION CONCEPTS**

## **MOHM IDEOLOGY**

COMFORT AND INNOVATION IN ONE

## **Our team**

PEOPLE ARE BEHIND ALL OUR ASSETS



company

# HISTORY

CRAFTING INNOVATION SINCE 1974



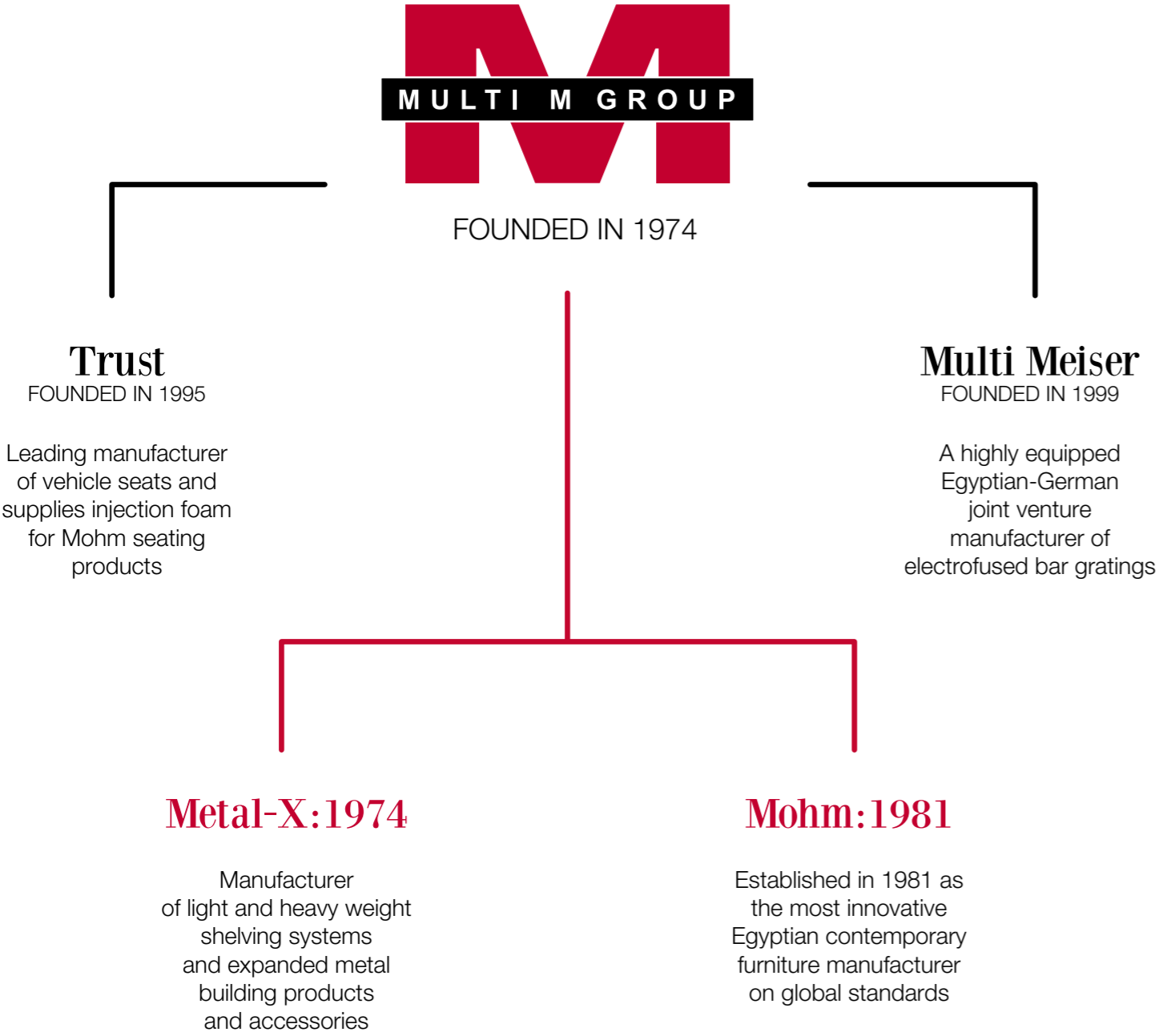
Eng. Abdelhady Abdelmoneim and Eng. Samy Fahim began Multi M Group in 1974. From humble beginnings in a rented workshop in east Cairo, came an engineering works that was to prove a trailblazer. In the same year, Metal-X was launched, offering a range of complimentary construction materials and engineering works to the market.

Today, 'Metal-X' is a market leader in expanded metal sheets. Combining the steel-works talents of a master craftsman with modern engineering and an instinct for flair, the two ambitious engineers created a line of furniture aimed at young couples building their first home.

The furniture was designed to be durable yet economical, but it was more than that, because it was stylish too.

Always being ahead of the curve, Eng. Abdelhady was quick to notice the impact computers were having on the workplace in the 1980s, and from this was born Mohm; a line of stylish, durable and ergonomic office furniture manufactured to global standards.





# Company timeline

BUILDING BLOCKS TO STYLE



Companies of Multi M Group



Sister companies of Multi M Group



company

# NEW PRODUCTION



## **NEXT GENERATION CONCEPTS**

Multi M Group continues to re-invent and invigorate itself. When the second generation of management took over they brought in new and inventive concepts, and created new lines using fresh designs and materials. The result is the modern, clean-cut lines of Mohm and Mohm lab, which reflect the changing approach to office work. New designers continue to join in the Mohm story, bringing their expertise and a novel approach to old lines, blending them with the latest trends to create products that are both timeless and on-trend.



company

# MOHM IDEOLOGY

COMFORT AND INNOVATION IN ONE

Mohm creates comfortable, stylish and innovating workspaces designed to inspire and motivate. Each item is produced to the highest standards using the latest state-of-the-art manufacturing technology to deliver a product that is durable and comfortable. We understand that our end users spend a considerable amount of time using our furniture each day and we make it our responsibility to ensure their physical comfort at work. Style is as important as comfort; we want our furniture to inspire as well as support.



company

# Our team

PEOPLE  
ARE BEHIND ALL  
OUR ASSETS

Our reputation is only as good as the people that work for us, and that is why Mohm has built a team of nearly 1,000 staff all dedicated to ensuring the very best quality in furniture design and manufacture.

The Mohm team comes from a diverse variety of backgrounds and experiences, and this keeps the creativity flowing.

Mohm is an equal-opportunities employer. Our management is on hand to develop and encourage all team members, as well as provide a sustainable working environment. All Mohm employees and management operate with a customer-centric approach.

To sustain this high level of our staff's proficiency, we encourage different training programs to be given to our primary asset: people.

company profile

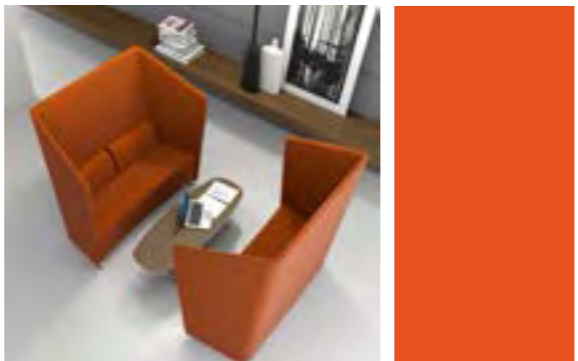
# products

NEW PRODUCTS  
CREATING SPACE INNOVATIVE SOLUTIONS

**MOHM LAB**  
BRINGING STYLE AND COMFORT TO THE WORKPLACE

# NEW PRODUCTS

CREATING SPACE INNOVATIVE SOLUTIONS



At Mohm, we don't just produce office furniture; we provide 'space innovative solutions'. As offices evolve so too do our product lines.

Our latest lines include the Aria Collection, providing a modern take on the executive office desk. This eye-catching, contemporary line looks stylish in any office. Designed to evoke spontaneity and the exchange of ideas, the Attiva Sofa Collection offers a fresh take on the waiting area set-up.

Classica Executive Line brings elegance and strength to the office, with a timeless design that is durable and discreet.

Infinity offers an up-to-date take on the office desk cubicle, with low-level divisions designed to promote concentration while also cultivating a friendly work environment.

Similarly, Modula workstation offers an intelligent desk space with integrated

cabling solutions to maximize work efficiency.

From Mohm Lab comes the Islands Sofa Collection, offering a myriad of seating options designed to bring comfort and design to casual meetings and waiting areas.

Also by Mohm Lab, Gilet offers a playful take on paperwork and periodicals storage, providing a splash of colour to the corporate world while Chai tables are available in a variety of colours, heights and shapes, offering a break from the norm when it comes to coffee tables, occasional tables and staff dining areas.

The Rondo range of office chairs and benches completes the new Mohm Lab line-up. With curved, ergonomic, colourful shells, the Rondo range is designed to cater to a variety of uses within the modern office.

products

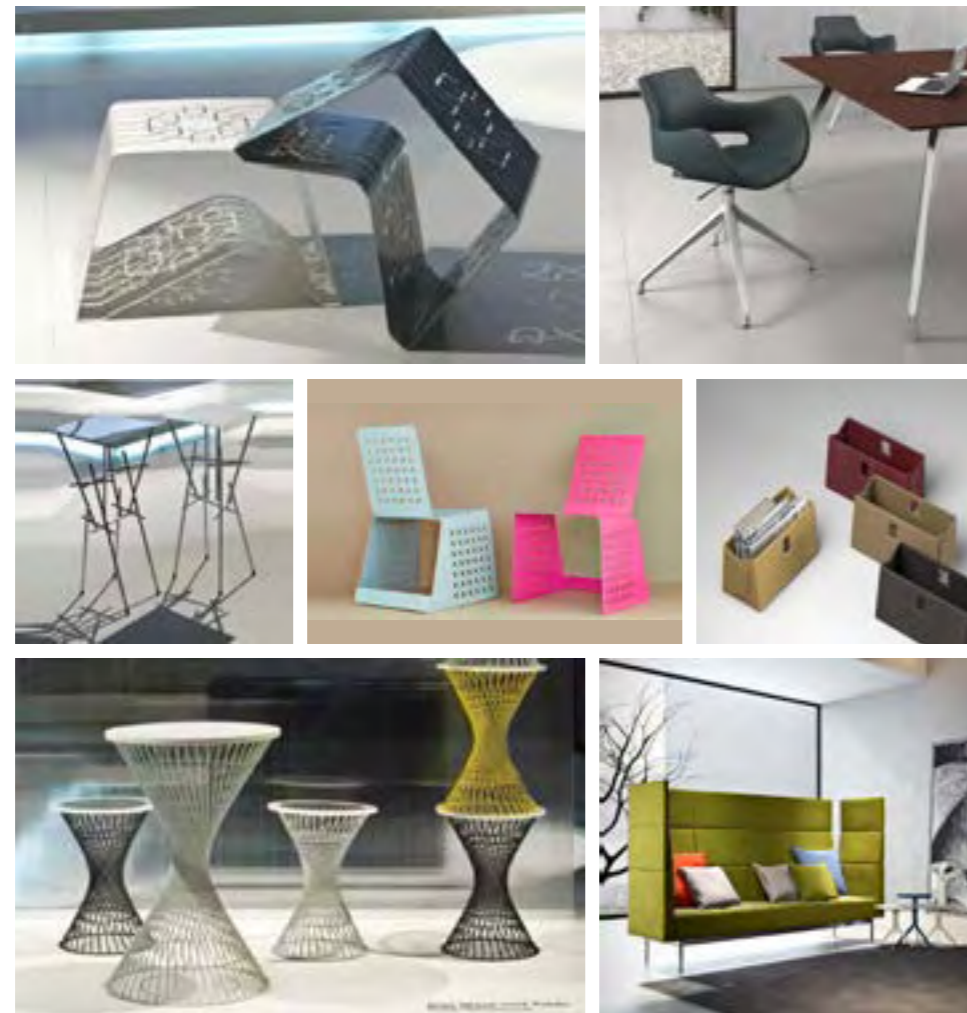
# MOHM LAB

BRINGING STYLE AND COMFORT TO THE WORKPLACE



Mohm Lab is the latest creation of Mohm. Introducing to the market a trendy product range with much of innovation in all processes; starting from design through production and to packaging. In Mohm-Lab, all ideas are welcomed, studied and refined for one purpose: trendy and practical office. The new sub-brand does not include traditional office items such as desks. Instead, it focuses on a range of chairs, sofas, occasional tables and unique storage options in eye-catching designs available in a variety of colors, heights and shapes. The aim is to bring a vibrant addition to the office set-up, to prompt casual meetings and provide sumptuous waiting areas. The designs always carry international trends, infused with the Italian taste and engineered meticulously to reach a seamless look.

MOHM<sub>lab</sub>



company profile

# designers

**DESIGNERS**  
FANTASY. FLAIR AND FORM



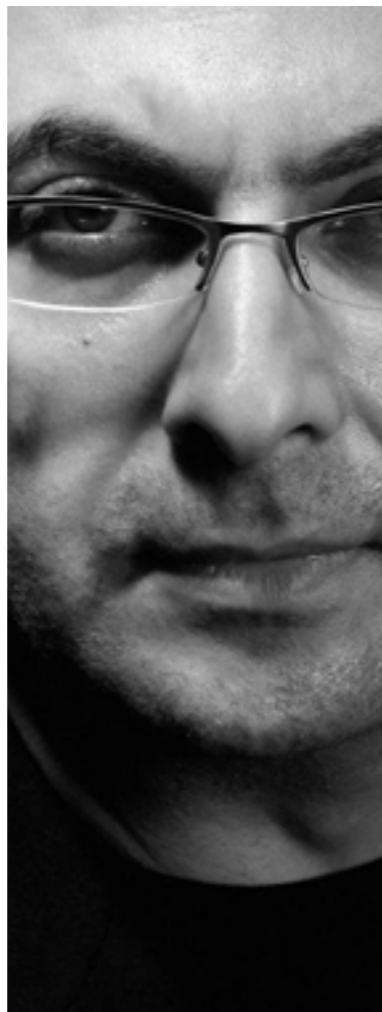
# DESIGNERS



**NIKOLAS CHACHAMIS**



**KARIM RASHID**



**KARIM MEKHTIGIAN**



**SHINICHIRO OGATA**

## designers

### FANTASY. FLAIR AND FORM

#### **NIKOLAS CHACHAMIS**

Nikolas Chachamis was born in Greece but later moved to Italy, where he graduated in Architecture at the Polytechnic of Milan. In 1987, he entered the world of industrial design in Italy, working closely with many Italian and international companies. Between 2003 and 2005 he lectured as visiting professor at the Department of Industrial Design at the University of Applied Technologies in Greece. His works have been shown in exhibitions and trade-fairs and have been showcased in many publications and international magazines. Still based in Italy, this industrial designer is one of the most influential in modern-day office design at present. He draws his inspiration from the 1970s, with a fresh approach to minimalism and clean lines. Nikolas has contributed a number of lines to the Mohm catalogue, including Rondo – a modern take on the traditional

office chair, available in high and low back; Aria Collection; Attiva Collection and the Classica Collection. He is also the Art Director of Mohm and Mohm Lab.

#### **KARIM RASHID**

Karim Rashid is one of the world's most influential industrial designers and interior architects. Born in Cairo, Egypt, but brought up in Canada, he combines Egyptian flair with modern-day minimalism. One of the most prolific designers of his generation, he has more than 3,000 designs in production, 300 awards and work in 40 countries. For Mohm, he designed several products brought the fantastical to the workplace, with curvaceous lines combined with strong, geometric designs.

#### **KARIM MEKHTIGIAN**

Karim Mekhtigian was born in Armenia, brought up in Cairo and studied in Paris before

returning to Cairo to establish his design studio. Pulling on his multicultural routes and international experience, yet staying close to home, he tries to subtly transpose the Cairene sensorial landscape into his designs. Mekhtigian co-founded the Egyptian Designers Forum (EDF) and works closely with the Egyptian Furniture Export Council (EFEC). He has contributed a number of table and chair designs to the Mohm line-up, including Taktouka, his take on the traditional coffee shop table in stainless steel and saturated colours.

#### **SHINICHIRO OGATA**

Born in Nagasaki Prefecture. Established Simplicity Co., Ltd. in 1998. Pursuing the concept of redefining the next generation of Japanese culture and design, Ogata has developed his own establishments including the Japanese dining club and

tea house yakumo saryo, the Japanese confectionery brand HIGASHIYA, and the product line S[es]. In addition to his own company's brands, Ogata is responsible for the design and direction of a wide range of projects in architectural, interior, product, graphic, and packaging design. In 2004, he took charge of the architectural and spatial design for Sansou Murata in Yufuin. In 2008, he managed the direction and overall design for the paper tableware series WASARA. In 2011, he completed the interior and spatial design for the University Museum of the University of Tokyo's Intermediatheque and was appointed Affiliate Associate Professor. In 2013 and 2014, he was in charge of interior and spatial design for skincare brand Aesop's stores "Aesop Kyoto" and "Aesop Shinsaibashi," and for Hyatt Hotel's Andaz Tokyo Toranomon Hills.

company profile

# production

**Mohm Factories**  
PRODUCTION AND INNOVATION  
COME TOGETHER

PRODUCTION  
FACILITIES  
**STATE-OF-THE ART CREATES  
ARTISTIC STATEMENTS**

**MATERIALS  
AND RAW  
MATERIALS**  
STRONG, SUSTAINABLE, STYLISH

**Iso Certified**  
GLOBAL STANDARDS GUARANTEED

**Eco Friendly**  
AS NATURE INTENDED

production

# Mohm factories

PRODUCTION AND INNOVATION COME TOGETHER



Mohm operates six factories in Egypt, each fitted with the latest, state-of-the-art manufacturing equipment to ensure consistent, timely, quality production around the clock. The Metal Factory is equipped with latest high technology machinery, including three CNC multi-punching machines, two CNC multi-bending machines and two powder-coating lines. The Wood Factory operates two production lines, a panel line and a massive line. The factory is equipped with the latest CNC multi-drilling machines, board cutting and paint lines as well as the latest edge-banding machine. Mohm's school furniture factory is equipped with multi-bending machines and the latest welding CO2 equipment and a powder coating line to ensure rapid, constant production of desks and chairs. The Plastic Factory is equipped with a high technology plastic injection machine capable of creating the unique, custom designs that Mohm has become famous for. The firm's Upholstery Factory is equally equipped with high technology machines and skilled workers to provide quality finishes to all Mohm upholstered lines.



production

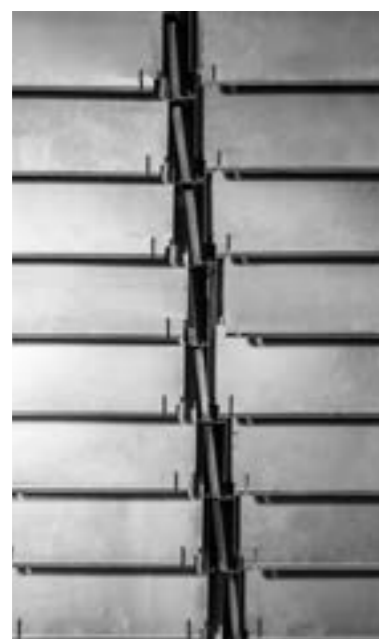
# PRODUCTION FACILITIES

## STATE-OF-THE ART CREATES ARTISTIC STATEMENTS

Mohm boasts one of the most modern, state-of-the-art manufacturing facilities in Egypt. Located in east Cairo, the company operates a 150,000 m<sup>2</sup> production facility run by a team of highly skilled and experienced engineers, operators and craftsmen. Utilizing the latest computerized technology to create precision-built items and customized products for projects in a variety of scales.

We employ a sophisticated system that ensures accuracy of information of raw materials required, items being produced and warehouse control.

This system guarantees a smooth operation between the different factories and the warehouses. More than 100,000 office units are produced each year, built from the very best in raw materials, as thousands of square meters of wood, metal, plastic and fabric pass through the factories.



production



# MATERIALS AND RAW MATERIALS

STRONG, SUSTAINABLE, STYLISH

At Mohm we source the best available materials and raw materials for use in our products.

Our furniture is manufactured from a range of quality materials, including wood, MDF and particle board with natural veneer, and HPL/melamine. This ensures our product line is as sustainable as possible.

Metal frames, metal perforated sheeting, mesh and wires are also used for many of our modern-day designs. These light, but hardwearing materials are well suited to the daily use of office furniture.

Our upholstery is crafted from the finest fabrics and leathers sourced from Italy to provide a touch of luxury to your workplace.

# ISO Certified

GLOBAL STANDARDS GUARANTEED



ISO 9001



ISO 18001

At Mohm we are always pushing the boundaries, looking to develop the best possible quality product for our customers and the highest standards to our employees. This is why Mohm is ISO 9001 certified. This guarantees to our clients and our staff that we are dedicated to providing the best-known standards in management, with a focus on sustainability and efficiency. As part of our environmental drive, Mohm factories are also ISO 14001 - 18001 certified. We embrace a paradigm of consistent quality and on-time delivery, with our quality inspectors on hand to ensure we meet and exceed what is expected from us. We believe in quality and durability.

production

# Eco Friendly

AS NATURE INTENDED



ISO 14001

Mohm is dedicated to upholding its eco-friendly commitments. An ISO 14001 certified company, we adhere to global standards of environmental management in order to minimize our negative impact on the environment, comply with laws and regulations related to environmentally friendly operations, and constantly seek ways to improve on the sustainability of our operations. As such, we employ a comprehensive waste management system throughout all operations and we limit our use of natural resources and only use natural veneers rather than solid wood on our furniture. All our packaging is also recycled.

company profile

# logistics

## LOGISTICS & FLEET

TO OFFICE, HOME OR SCHOOL - ON TIME, EVERY TIME

## DISTRIBUTION SYSTEM

MADE LOCALLY, EXPORTED GLOBALLY

logistics



# LOGISTICS & FLEET

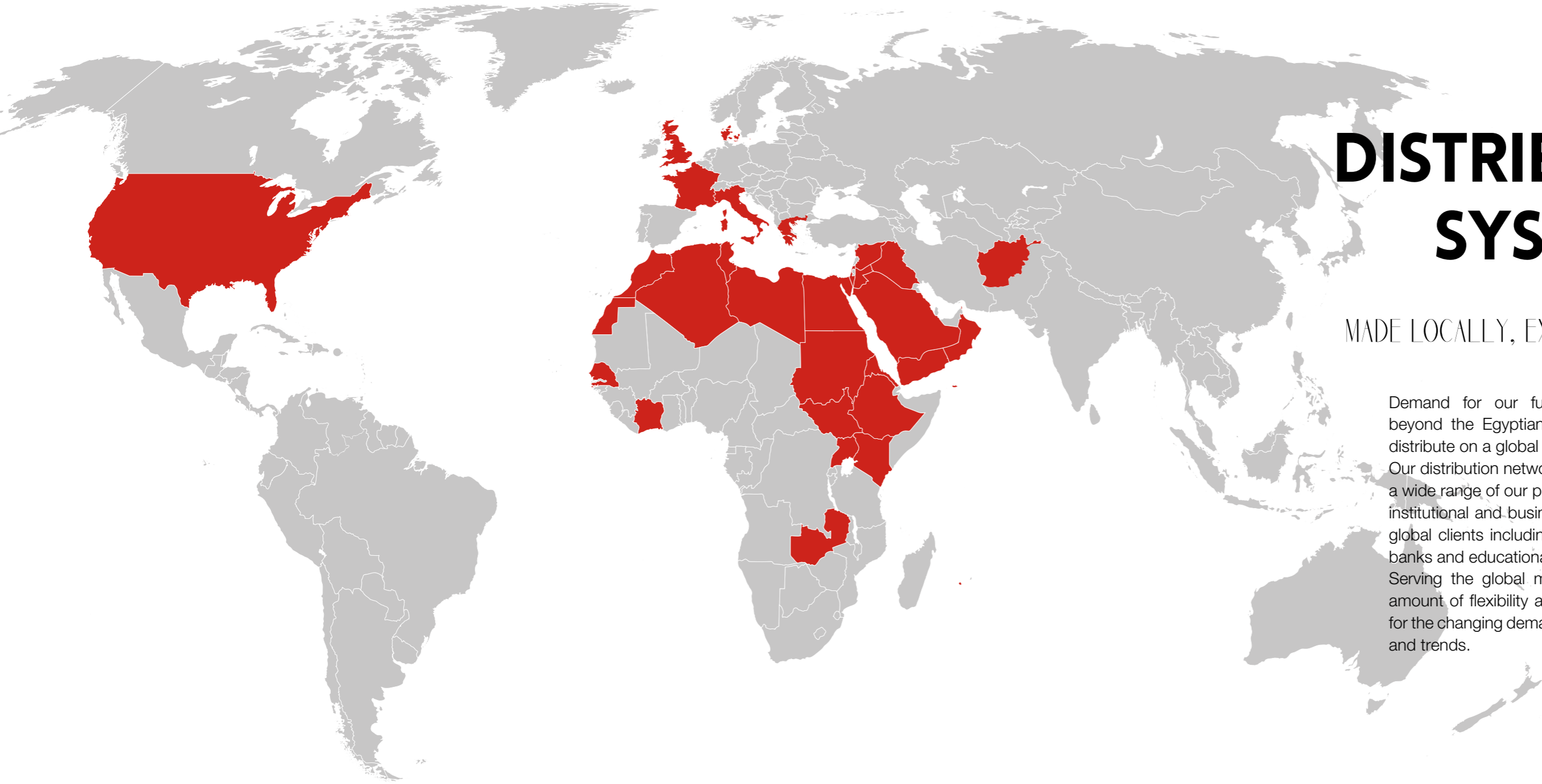
TO OFFICE, HOME OR SCHOOL - ON TIME, EVERY TIME

Mohm understands that every order has a strict delivery timeline and that our clients are often eager to receive their new units as soon as they come off the production line. This is why Mohm operates a modern fleet of nearly 70 vehicles, including delivery trucks of various sizes and specifications, to ensure a flawless and timely delivery for every order.

For overseas customers, we have developed strategic alliances with international and local shipping agencies to ensure that our export business dispatches as efficiently as our domestic business.

Whatever the order, big or small, you can be sure that we will carry it to your door with all the care and attention that we put into crafting it.





# DISTRIBUTION SYSTEM

MADE LOCALLY, EXPORTED GLOBALLY

Demand for our furniture has expanded beyond the Egyptian market, and we now distribute on a global scale. Our distribution network enables us to export a wide range of our products to various institutional and business organizations, with global clients including business complexes, banks and educational establishments. Serving the global market requires a great amount of flexibility and adaptability to cater for the changing demands and different tastes and trends.

company profile

# headoffices & stores

## HEADOFFICES

INNOVATION ON SOLID GROUNDS

## Showrooms

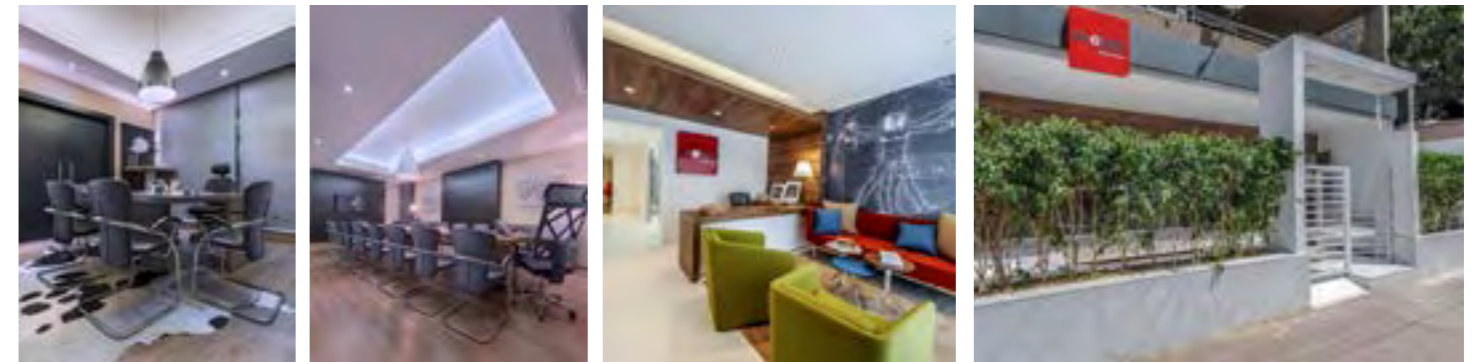
SEE AND FEEL THE QUALITY AND COMFORT

NEW  
CAIRO  
CONCEPT  
STORE  
**FACTORY STORE**



headoffices & stores

# HEADOFFICES



## INNOVATION ON SOLID GROUNDS

Mohm's headquarter is located in factories perimeter in Khanka City, Kalyoubia and Cairo's head office is located in Asmaa Fahmy street in Heliopolis where also the project sales is based. In our offices, too many meetings, calls and business transactions are on the move and what may sound too loud for some, for us is just a normal day.

headoffices & stores

Alexandria

Khanka

10<sup>th</sup> of Ramadan

Heliopolis

Mohandseen

New Cairo

Assyuit

# Showrooms

SEE AND FEEL THE QUALITY AND COMFORT

Provides our customers with an insight into the style and innovation that is Mohm, with furniture on show in office and home scenarios pioneering the real-feel display concept in Egypt.

Our sales agents are on hand to offer advice and design experience for making the most of your office space within your budget and in keeping with your brand.

Come and feel the quality and comfort that is Mohm and visit us in Cairo, Giza, 10th of Ramadan, Alexandria and Assiyut.

headoffices & stores

# NEW CAIRO CONCEPT STORE & FACTORY STORE



New Cairo Concept Store



Factory Store



company profile

# communication & events

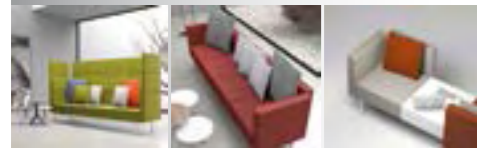
**COMMUNICATION  
& EVENTS**

GETTING IN TOUCH, GETTING CLOSER

**PRODUCTS**



**Islands Sofa**  
Finely tuned to serve the optimal purpose of casual meetings and lavish waiting areas also available with electrical box with rotating top.



**PROJECTS**



**At Zinia Offices**  
At Zinia which is one of the top five companies in the real estate industry, Aria meeting table is nearly eight meters long with smart cabling solutions.



**EVENTS**

Thinking of non-traditional meeting setup that takes your meetings to a whole new level? Blanco meeting table and Activa seating system should be the answer...

Thinking of non-traditional meeting setup that takes your meetings to a whole new level? Blanco meeting table and Activa seating system should be the answer...

**INTERVIEW**

**Nikolas Chachamis**  
www.mohmfurniture.com



# COMMUNICATION & EVENTS

GETTING IN TOUCH, GETTING CLOSER



Mohm believes in communication and active dialogue with customers and other entities. Therefore, Mohm has established a solid communication platform including different communication channels e.g., website, newsletters, social media and print media. Events and exhibitions are considered of great importance to showcase new products added to the portfolio. Thus, Mohm is keen to participate in international, regional and local exhibitions and bring the product range to an adequate exposure.

company profile

# references

## References

- EXPORT
- LOCAL (GOVERNMENTAL SECTORS)
- AUTHORITIES
- BANKS
- EDUCATION
- JOURNALISM
- HEALTH SECTOR (HOSPITALS)
- HOTELS & TOURISM SECTOR
- PETROLEUM SECTOR
- MISCELLANEOUS





**Bibliotheca Alexandrina**



**Dorra**



**Lake view**



**Linguistic Assembly**

## references

# References

### EXPORT

Yemen	Afghanistan
KSA	Sudan
Libya	Italy
Qatar	Iraq
Uganda	Lebanon
Kenya	Greece
Ghana	UAE
Senegal	USA
France	Germany
Cyprus	Syria

### LOCAL GOVERNMENTAL SECTORS

Bibliotheca Alexandrina  
 Council of Ministers  
 President of the Republic  
 Public Authority for Educational Buildings  
 EAEA

### MINISTRIES

Ministry of Foreign Affairs  
 Ministry of Interior  
 Ministry of Education  
 Ministry of Higher Education  
 Ministry of Defense (Information Systems)  
 Ministry of Transportation  
 Ministry of Public Works and Water Resources  
 Ministry of Scientific Research

Ministry of Youth and Sports  
 Ministry of Health and Population (Technical Support Sector)  
 Ministry of Labor Force  
 Ministry of Telecommunication  
 Ministry of Agriculture

### AUTHORITIES

Pharmaceutical Research Control  
 Egyptian Medical Syndicate  
 New & Renewable Energy Atomic Energy  
 Multinational Force (UN)  
 Electricity Authority  
 Radio and TV  
 Public Authority for Biological Products  
 National Postal Authority  
 Public Authority for Investment Engineers Syndicate  
 Administrative Prosecution

### GOVERNMENTAL ORGANIZATIONS

General Sales Tax  
 Egyptian Customs Authority  
 Productivity and Vocational Training Department

### EMBASSIES

British Embassy  
 U.S. Embassy  
 Embassy of Pakistan

South African Embassy  
 Embassy of the Russian Federation

### BANKS

Crédit Agricole Bank  
 Industrial Development Bank  
 Barclays Bank  
 NBE  
 Banque Misr  
 BNP Paribas  
 Development and Agricultural Credit Bank  
 American Express Bank  
 HSBC  
 Union Bank  
 Central Bank  
 NSGB Bank (Now QNB)  
 Egyptian Gulf Bank (EGBE)

### EDUCATION

Ain Shams University  
 Cairo University  
 Alexandria University  
 Military Technical University  
 Azhar University  
 Assiut University  
 Menoufia University  
 Suez Canal University  
 Minya University  
 6<sup>th</sup> of October University  
 South Valley University  
 Egypt Science and Technology



Nile Projects



Itida



Sakan



UNB Madinaty

## references

October University for  
Modern Science & Arts  
Mansoura University  
British University  
American University  
Sur University (Oman)  
Turkmenistan University  
Nursing College  
Engineering College  
King Marriott Academy  
Alexandria Medical Research Institute  
Arab Academy for Science,  
Technology & Maritime Transport  
Pharos University

### SCHOOLS

B.B.C  
Nozha Language School  
Europa Schule Cairo  
Choueifat  
Orman Schools  
Al-Bayan  
St. Fatima  
Modern Education  
Sun Rise  
Futures  
Thebes Language School  
Cleopatra  
Greek School  
Nile Egyptian Schools  
Baraem Misr  
Orman Schools  
British Columbia Canadian  
International School  
Metropolitan

### JOURNALISM

Al-Ahram  
Akhbar Elyom  
Algomhuria  
Al-Ahaly  
Al-Wafd  
Rosalyousef  
Tahrir  
Alam Alyawm  
Shorouk  
October

### HEALTH SECTORS (HOSPITALS)

Saudi German Hospital  
Kasr-Alainy  
Hussien University Hospital  
Zagazig University Hospital  
Ain-Shams  
Ismailia University Hospital  
Wadi El Nil  
Insurance Hospitals  
Assuit University Hospital  
Red Crescent Hospital  
Al-Shorouk Hospital  
Dar Al-Fouad  
El-Manial Specialized University  
Hospital  
Nile-Badrawi Hospital  
Damascus Hospital  
Railway Hospital  
Shatby Hospital  
Kids-Hospital  
Al-Rowad Eyes Hospital  
El-Katib Hospital  
Abulreish Hospital

### HOTELS & TOURISM SECTORS

Marriott Hotel  
Oberoi Hotel  
Safir Hotel  
Pyramisa  
Intercontinental  
Royal Azur  
Baron Hotel  
Queen Sharm  
Sonesta  
Egyptian Tourism  
Beau Site  
Concorde  
Marina Plaza (Aqaba-Jordan)  
Aghadeer(Morocco)  
Riad Salam Hotel (Morocco)  
Sheraton Cairo Airport

### PETROLEUM SECTORS

Shell  
EPSCO  
Apache  
Shukeir  
Petro gas  
Petro  
GASCO  
TECHNO-Petroleum  
Belayim-Oil Company  
Petrojet  
Mobil  
Rashid Petroleum  
Petro-trade  
Egypt-Gas  
Town-Gas  
Sidpec



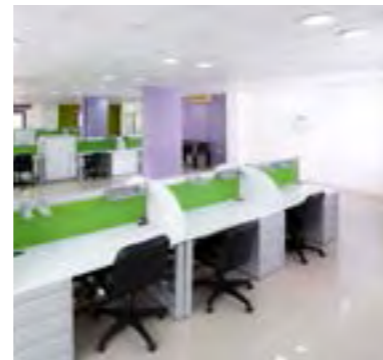
Saudi German Hospital



Zizinia



Japanese Pharma Company



Invensys

## references

Elab  
 Misr-petroleum  
 Enppi Global Toyo  
 Eprom  
 El Hamra Oil  
 Vehicles  
 General Motors  
 Hyundai  
 Hashim Bus  
 Mercedes-Benz  
 Mitsubishi  
 KIA  
 Auto Egypt (Nissan Egypt)

### MISCELLANEOUS

Dream-Land  
 Orascom  
 Samsung  
 Dary  
 Juhayna  
 Kabnoury  
 CMB Center  
 Tarek-Nour  
 Chloride  
 Arab-Cont.  
 Kajima  
 Unionaire Group  
 Toshiba  
 Moharram Bakhom  
 Asfour Crystal  
 Cleopatra Ceramics  
 Gemma Ceramics  
 Binladin  
 GlaxoSmithKline  
 Oriental Weavers  
 Pfizer  
 Medicap  
 Japanese Pharmaceutical  
 Sakan  
 Lake View

Dorra  
 Hassan Allam Sons  
 Tasty Foods  
 Hi-TEK  
 Pierre Cardin  
 Eastern Company Egypt  
 Gold-Star  
 Euroquarzo  
 Arab Finance  
 Siemens  
 Nahdet Misr For Cinema  
 Abu-qir  
 Safmarine Shipping  
 El-Marasem  
 Fedeco  
 Wadi Degla (Maadi)  
 Wadi Degla(6th of October)  
 Wadi Degla (Sheraton)  
 Management Consulting Services (MCS)  
 El-Morshed  
 El-Ameen  
 International Cables Co. (ICC)  
 Sanofi Aventis  
 BESIX Orascom  
 Egyptian French Joint Venture  
 Mobinil (Now Orange)  
 Teleperformance  
 L'oreal  
 The New Museum Project  
 Cleopatra Touristic Investment  
 Shell  
 Aramex  
 Amriya Pharm  
 AlexFert  
 Pharmaplast  
 The UN Refugee Agency  
 British Council  
 American Culture Center  
 Kwbwsh for packaging

Tolip Royal Hotel  
 Al-Abd  
 Sidi Krir Generating Company  
 Lecico for Ceramics  
 Degremont  
 Nile Projects & Trading  
 Pirelli  
 Arab Company for Pharmaceutical Products & Gelatinous  
 Farco Make  
 Pharco Pharmaceuticals  
 Unilever  
 Talaat Moustafa Group  
 Cargill  
 Lord  
 Pharaonia Pharmaceuticals  
 Academy of Arabic Language in Cairo  
 Cedar Glass  
 Nola Foods  
 Sugar Gifts  
 Scib Paints  
 Rameda Pharmaceuticals  
 Rich Bake  
 Noor Eloyon Specialist Center  
 Bab Rizq Jameel  
 Federation of Egyptian Industries  
 Travco Group for Engineering & Construction  
 Advansys  
 Bupa Intl (Health Insurance)  
 Cleopatra Media Group (El-Balad TV)  
 Arabia for Housing and Reconstruction  
 The National Council for Women  
 CBC Television Network

company profile

contact us

**Head Office**

2 Asmaa Fahmy st., Heliopolis,  
Cairo, Egypt  
Tel. (+202) 2417 5822/ 2417 1702/  
2417 0726/ 2417 0728  
Fax (+202) 2690 3694/ 2291 9273  
info@multigroup.com

**Factories**

El Khanka City, Kalyoubia, Egypt  
Tel. (+202) 4469 8991/ 4469 6494  
Fax (+202) 4469 8212  
Customer Service (+202) 4469 6640

**Showrooms**

Heliopolis  
69 Nabil El Wakad st., Ard El Golf,  
Heliopolis  
Tel./Fax (+202) 2419 1208 – 2419 3695

**Mohandessin**

55 El Nakheel st. from El Battal Ahmed  
Abdel Aziz st., Mohandessin  
Tel. (+202) 3338 7004/5  
Fax (+202) 3338 7006

**New Cairo**

90th st., Plot 318, Second Sector,  
New Cairo  
Mob.+2010 999 67381

**Alexandria**

Saraya Style Bldgs., Next to 14 May  
Bridge, Smouha, Alexandria  
Tel. (+203) 9575 901 – 4297 281  
Fax (+203) 4291 766

**Assyuit**

14 Mahmoud Rashwan st., beside Al  
Hayah Hospital – 1<sup>st</sup> floor  
Tel./Fax (088) 2310 252

**10<sup>th</sup> of Ramadan**

Dinarene, El Mostashfa El Aam st.,  
Al Ordonia Commercial Complex,  
10<sup>th</sup> of Ramadan City  
Tel/Fax (015) 3622 73



mohmfurniture.com

150378

## company profile

**A.D.**  
Nikolas Chachamis

**Graphic Design & 3D**  
Archimedia

**Printed**  
Sep. 2016

ISO 9001:2008  
ISO 14001  
OHSAS 18001



The mark of  
responsible forestry

part of



**mohm**  
WORKPLACE IDEAS