

Atium

URBAN & INDUSTRIAL DEVELOPMENT

TABLE OF CONTENTS

ABOUT US	03
WELCOME MESSAGE	04
ABOUT THE FOUNDER	05
OUR SERVICES	07
- Industrial design & built	
- Feasibility studies	
- Urban & infrastructural development	
- Engineering design	
- Construction & project management	
- Sustainable engineering	09
- Value Engineering	10
HOW IT WORKS	12
OUR PROCESS	13
	17



ABOUT US

ATUM is a limited liability company based in Egypt, Cairo and delivering a Full-Service Design-Build Solutions with decades of urban, industrial design-build experience.

ATUM offers a wide array of architectural, engineering, construction and industrial development services through our national network of specialized companies.



Our successful track record ensures that we will provide the most suitable solution for our valued customers.



THANK YOU FOR CHOOSING US

I want to take this time and thank you for choosing ATUM and giving us the privilege of helping you to achieve your business goals.

When you need your factory or retail space designed and built for your specific needs, our company is ready to help.

At ATUM, we exceed your expectations from initial space plan drawings and schematic renderings to final build walk-through. We handle every detail of your design-build project and ensure every aspect of your remodel or new build project, from planning, design and construction to custom cabinets, painting and workstations.

We encapsulate and set apart your business brand. Our personal approach and commitment to success make ATUM is the choice for your next project remodel or new design-build project.

I feel honored to be a part of this family and journey. We look forward to building for the next generation in partnership with customers like you.

Thank you

MAHA SHALABY

**EXPAND YOUR BUSINESS WITH
US, BECAUSE WE HAVE A GOOD
IDEA FOR YOU**

ABOUT THE FOUNDER



Maha Shalaby
Founder

Atum

URBAN & INDUSTRIAL
DEVELOPMENT COMPANY

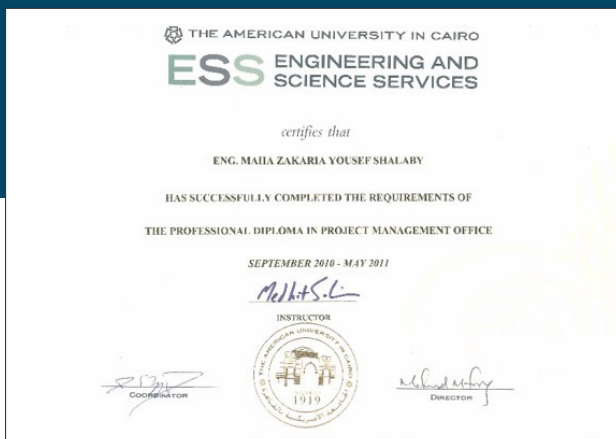
Maha has over 20 years in the design and construction industry, She completed her B.SC degree in structure civil engineering from the faculty of engineering, Alexandria university, graduation year is 2000

She developed her studies to project and construction management field by completing PMO (Project management office) from the AUC in 2010.

She has an excellent solid technical background and experience in project management, She started her freelancer business in 2002 by joining many of mega consulting offices specially in Gulf area.

Established her engineering office ATUM in 2005 and then develop her activities to establish her development company in 2020.

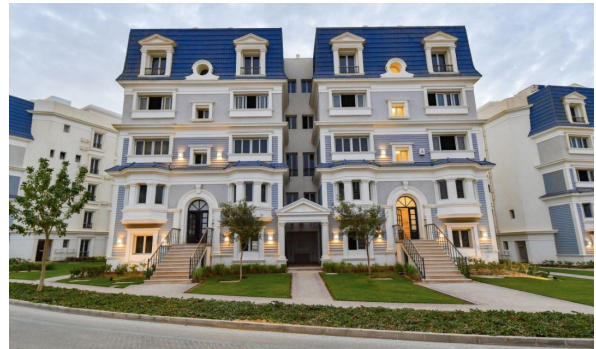
Her position as a lead engineer and owner representative enabled her to expand her knowledge in this subject and be able to handle big projects during its design phase up to construction phase.



THE FOUNDER IS HONORED TO PARTICIPATE IN MEGA PROJECTS DURING HER WORKING LIFE AS A STRUCTURE DESIGN MANAGER



I-CITY NEW



HYDE PARK



PORTO CAIRO MALL

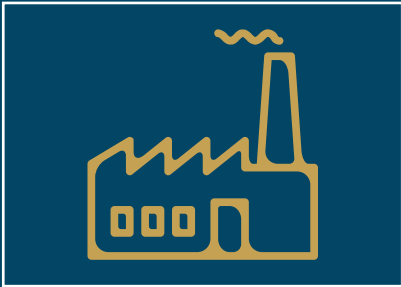


PORTO SOUTH BEATCH



MOUNTAIN VIEW RAS EL

OUR SERVICES



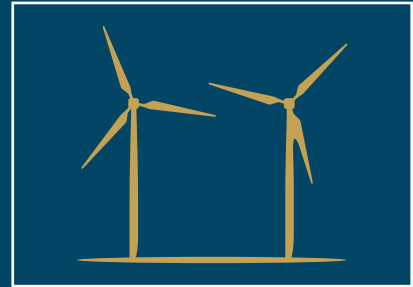
Industrial design & build

- Engineering design & build for factories and production lines
- Preparing economic and planning studies for the industrial zone
- Infrastructure Construction works for the industrial zone
- Pre-constructed building ready for investment
- Managing and maintaining the industrial zone and it's the facilities
- Planning, implementation and developing urban and industrial areas, urban communities, remote areas and areas outside the Old Valley
- Feasibility studies, technical and economic research for investment projects in the field of infrastructure



Urban & infrastructural development

- Master planning
- Urban design
- Landscape design
- Roads & Bridges
- Water supply systems
- Sewage networks
- Power supply
- Telecommunications network



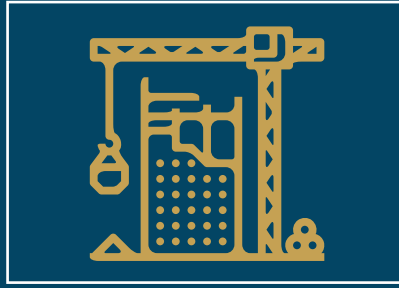
Sustainable Engineering

- Sustainable Site and Location
- Water Conservation
- Energy Conservation
- Indoor Environmental Quality
- Green materials



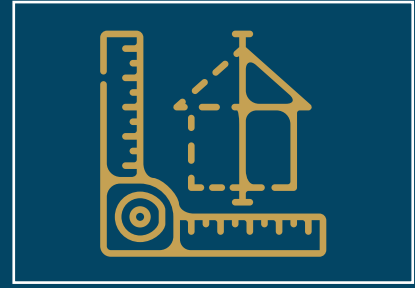
Feasibility studies

- Marketing study
- Technical and production study
- Organization and management study
- Financial study
- Economic desirability study



Construction & project Management

- Construction supervision
- Cost, materials and labor estimation
- Tendering process and conduct negotiation.
- Procurement and contract management
- Shop drawings & invoices



Engineering Design

- Architectural design
- Structural / civil design
- MEP system design
- Interior design



Value Engineering

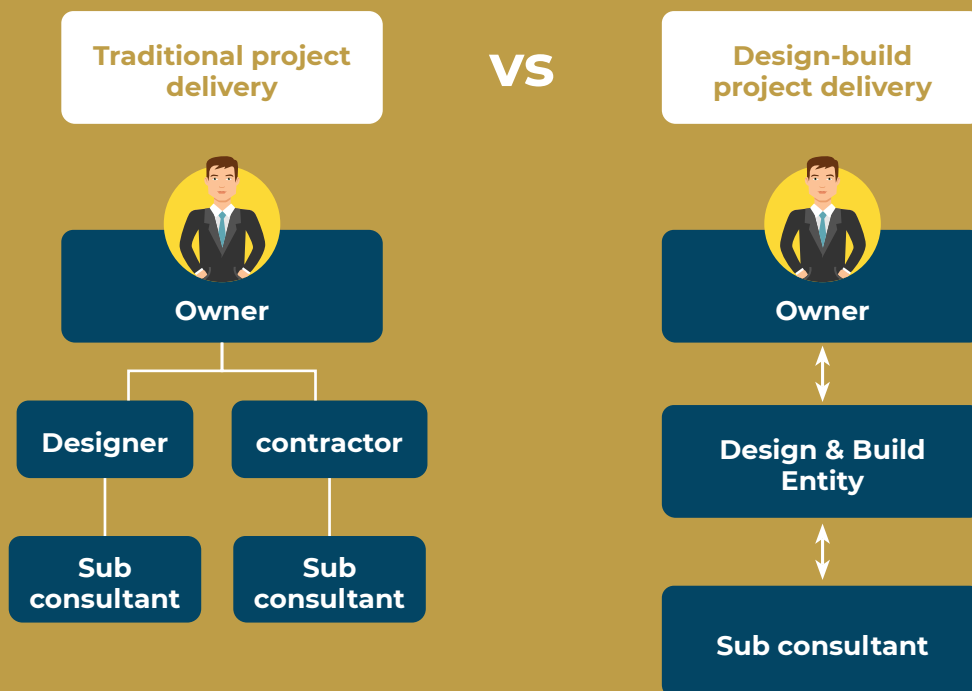
- Apply value engineering in projects
- Use the benefit from the VE (Function analysis)
- Compares between alternatives by using (QBS)
- Integrate VE within the design stages
- Distinguish between VE and other improvement techniques (Cost reduction, Design review, ...)

HOW IT WORKS

Design-Build is a method of project delivery in which one entity – the design-build team – works under a single contract with the project owner to provide design and construction services. Thereby re-integrating the roles of designer and constructor.

Design-build is an alternative to the traditional design project delivery. Under the latter approach, design and construction services are split into separate entities, separate contracts, separate work.

Design-build successfully delivers both horizontal and vertical construction projects with superior results – no matter what the project type.





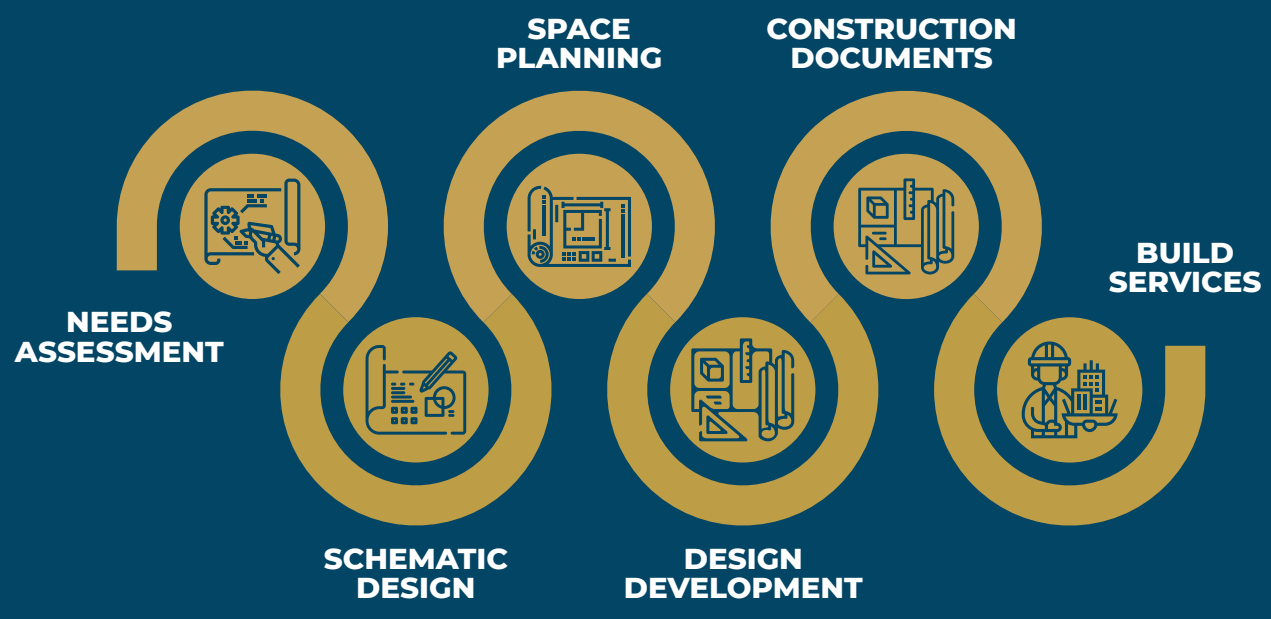
OUR PROCESS

Our Process Working together to exceed your vision every step of the way

Every good design-build company uses a similar process, but there's one major differentiator between ATUM and everyone else: we're closely involved during every stage of every project. Most companies treat design and build separately.

They'll design it, pass it off to the build team, and then check in again at the end of the project to make sure everything is good enough. "Good enough" doesn't cut it for us. We're always there to make sure every detail is just right and that any surprises are handled expertly before they can derail the project.

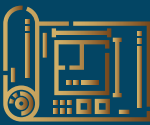
Although no two projects are the same, here's the typical process from project inception to completion.





Needs assessment

We start by listening to your goals and concerns. Through interviews, observations and site verification of your space, we collect the information necessary to clearly understand your needs, objectives and brand. Then we clearly define the project scope in a way that specifically addresses those needs.



Space planning

We take the mutually approved schematic design and develop a space plan with walls, doors, space areas, and other elements as needed. Our plan also includes your existing office inventory and/or new furniture workstation options. Combining our expertise and experience with your needs and wants, we work closely with you to refine the plan until you're satisfied.



Construction documents

We create detailed drawings and written specifications to clearly describe the construction and interior design elements, including any custom designs or built-in elements. When required, we coordinate our documents with qualified and licensed consultants for structural or mechanical and electrical engineered drawings. When all drawings are ready, our team reviews the documents with municipal jurisdictions to ensure your project will meet all applicable local codes.



Schematic design

We transform our assessment into space plan options and design concepts that will enhance workflow and address special needs and group support functions. We work closely with you to define project design, costs, and timeline.



Design development

Our design team creates a vision based on the theme, style, and finishes we've discussed. Finishes vary widely, and we will show you the different options based on your budget and the long-term value they provide. This is a crucial phase for the final product, so we communicate frequently to ensure mutual acceptance before moving to the next step.



Build service

We offer turnkey design-build services to take your project from concept to completion. Our professional team of experienced designers and build contractors will ensure your project is on time, on budget, and beyond your expectations. Your dedicated designers will be active participants in every stage of the build to keep the project on schedule and within the approved design. We don't just hand things off to the builders and check in at the end when they are done. We are physically present any time any work is being done on your project.

JOINT VENTURE COMPANIES



ProMEP a Consultation Company, providing its quality services to customers in the Middle East and Africa in Electro-Mechanical studies and design

ProMEP was established back in 2011, and since then it has witnessed steady growth in terms: of number of partners, products, customers/industries served, employees, and revenue.

Specialists in Electro-Mechanical systems and their design and studies

Provide all The economic, financial and legal studies necessary for the investor by studying the appropriate investment areas for the type of investment required to be made, as well as studying the terms and conditions brochures and all the procedures and requirements for licenses and construction from the engineering and legal point of view before the investor begins the process of buying and submitting and proposing The available alternatives and the most suitable for him.



OUR PROJECTS

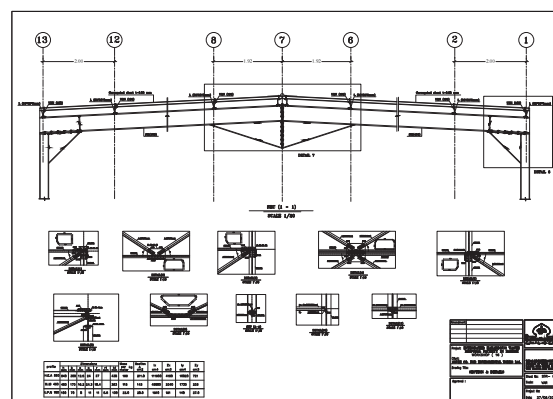
INDUSTRIAL PROJECTS

Package	FACTORY
Client	WADI EL NILE COMPANY, EGYPT
Area	7050 M2
Atum Scope	DESIGN & BUILT
Year	2020



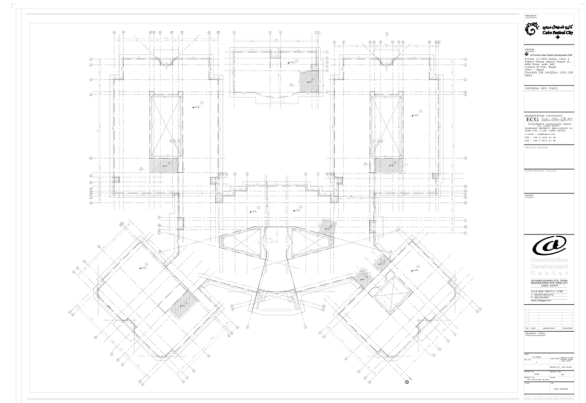
Warehouse for Integrated Hazardous waste disposal facility

Client	Rabigh group
Area	1000 M2
Atum Scope	STEEL & CONCRETE DESIGN
Year	2007



COMERCIAL PROJECTS

Cairo Festival City mobilization area	
Owner	AL-Futtaim Group
Main Contractor	Orascom
Area	15500 m2
Location	1ST SETTELMENT, Cairo
Description	The project comprises of 2 buildings located within the same site , one of them is the offices building, the other building is the restaurant
Atum Scope	structure shop drawings
Year	2008



El- Azzezya Hotel	
Owner	Rabigh Group
Area	14000 m2 - 24 floors
Location	MAKKAH , SAUDI ARABIA
Year	2006



ADMINISTRATION PROJECTS

Courts and Kateb El-Adl buildings	
Client	Ministry Of Justice, Saudi Arabia
Main Consultant	SAK – Soliman A.kheriji
Area	30 Different sites around the kingdom
Atum Scope	Post tension structural design
Year	2010



Rehabilitation Building	
Client	Islamic Development Bank
Consultant	Tarik EL-yaffi Consultant office
Location	Jeddah, Saudi Arabia
Area	800 m2- 4 floors
Atum Scope	Precast prestressed element design
Year	2005



RESEDINTIAL PROJECTS

Porto cairo villas	
Client	Amer group
Main Contractor	Arabtec Egypt
Atum Scope	Shop drawings & quantity survey
Year	2013



Moon Tower high rise residential building	
Area	25 floors – 3 parking floors
Location	King Fahd Street, Riyadh, Saudi Arabia
Year	2009





ADDRESS: 1st settlement.
MQR offices.. office 22

Mobile: 01028020108
Email: info@atumegy.net

www.atumegy.net