

**Hady Meiser**  
STEEL GRATING S.A.E





**[Grating] n:**

*The art of making a firm surface out of almost nothing*

*Try asking non-experts what a grating is. "A grating?", most of them will reply, "a grating is a kind of floor, on which you can stand quite safely. But when you look down, you get the feeling you're standing in mid-air".*

*Indeed, more than 80% of any grating does exist of holes! We simply exploit the fact that a strip of metal positioned perpendicularly and anchored securely can carry a substantial load.*

*Meiser grating is acknowledged by trade specialists to be one of the best products of its kind in Europe. It's a fair assessment, we feel, and part of the reason is undoubtedly the committed work of our planning department and our reliable delivery dates.*

*But why don't you see for yourself?*

The Functional Advantage .....	1
References .....	3
Our Products	
<i>Anti-skid Gratings</i> .....	5
<i>Fastening and Safety Elements</i> .....	5
<i>Shelf Gratings</i> .....	6
Staircase Installations .....	7
Press welded gratings .....	9
load tables for press welded gratings .....	11
Job References .....	13
Sales & distributions .....	17
Hady Meiser Egypt .....	19

## The Functional Advantage

*Any of a group of related actions contributing to a larger action.*

The functional advantages of grating are much more versatile than you may think.

Starting with a very firm surface. Compared to the amount of material that goes into them, gratings have an incredibly high statical quality.

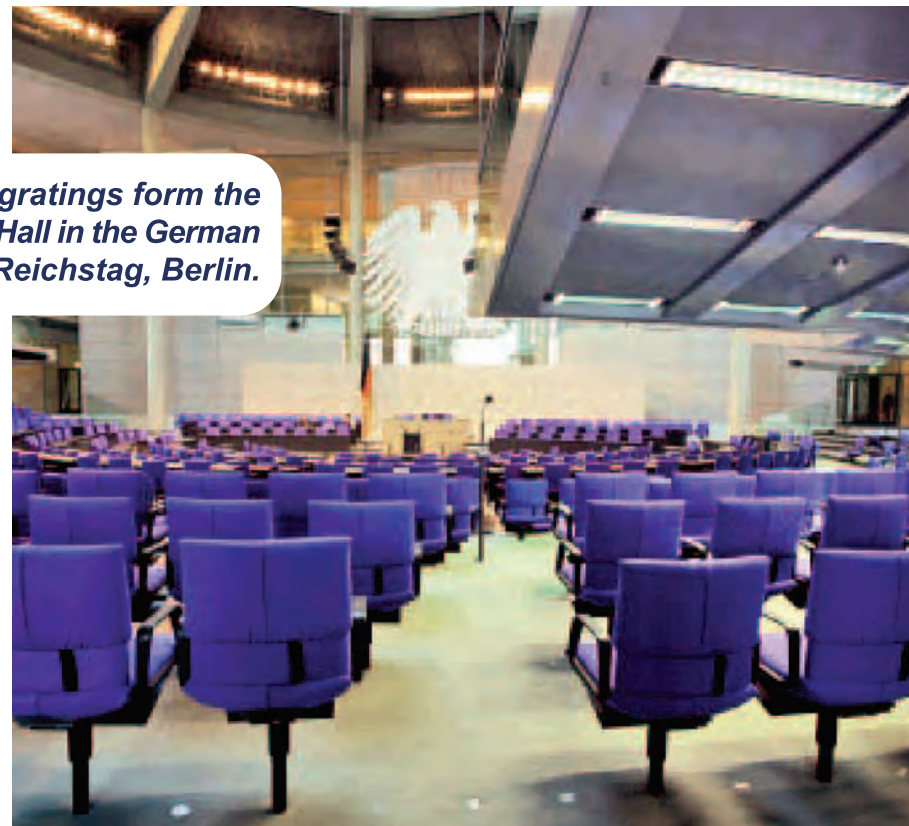
A further advantage is that grating constructions can be assembled easily and quickly and dismantled, too if, for whatever reason, you wished to re-open the area used.

Another advantage – the “transparency” – perhaps takes getting used to.

If you combine grating floors with other kinds of covering, further advantages become clear.

*In the Plenary Hall of the (new) German Parliament in the (old) Reichstag building in Berlin, for example, Meiser gratings were used as the underfloor structure for a top quality covering. The entire area is air-conditioned from below. This also made it easy to wire up the German deputies’ desks with various telecom cables.*

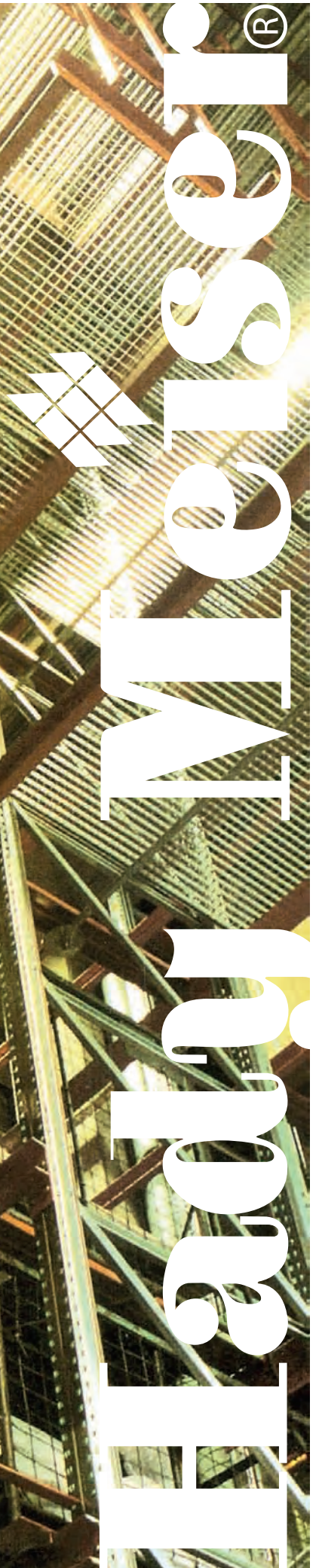
Not only that: as parliamentary majorities change, so too can groups of seats be re-arranged without a hitch – thanks to the Meiser grating solution.



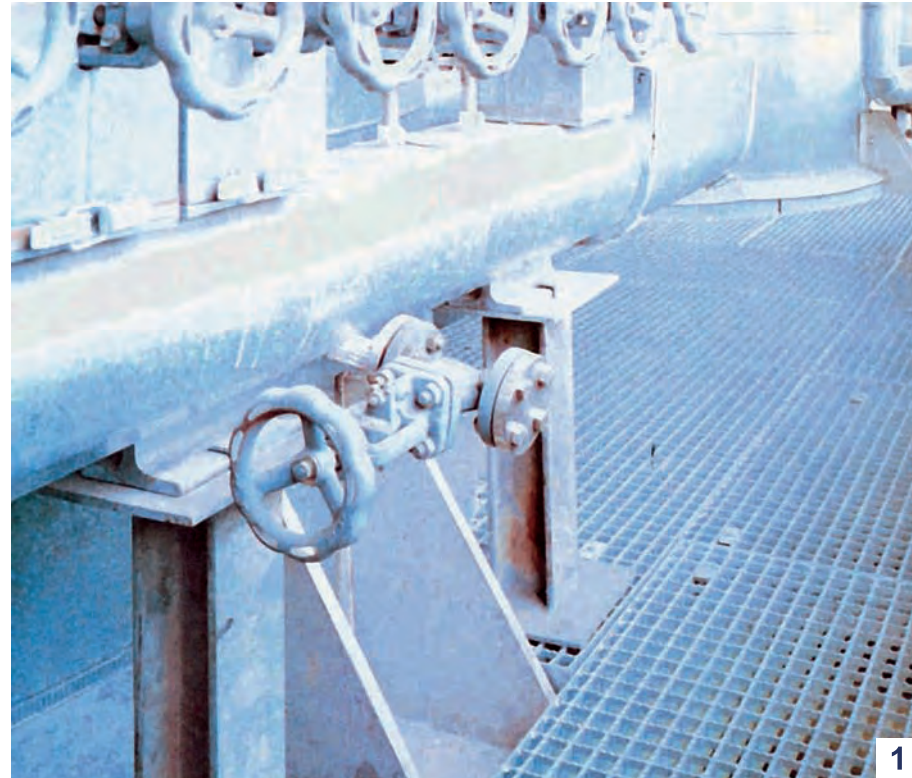
*Meiser produced gratings form the substructure to the Plenary Hall in the German Parliament housed in the Reichstag, Berlin.*



*Meiser grating. As flexible in its applications as inflexible bearing a load.*



**1** Anti-skid grating on a work platform at L.N.G. EDECO



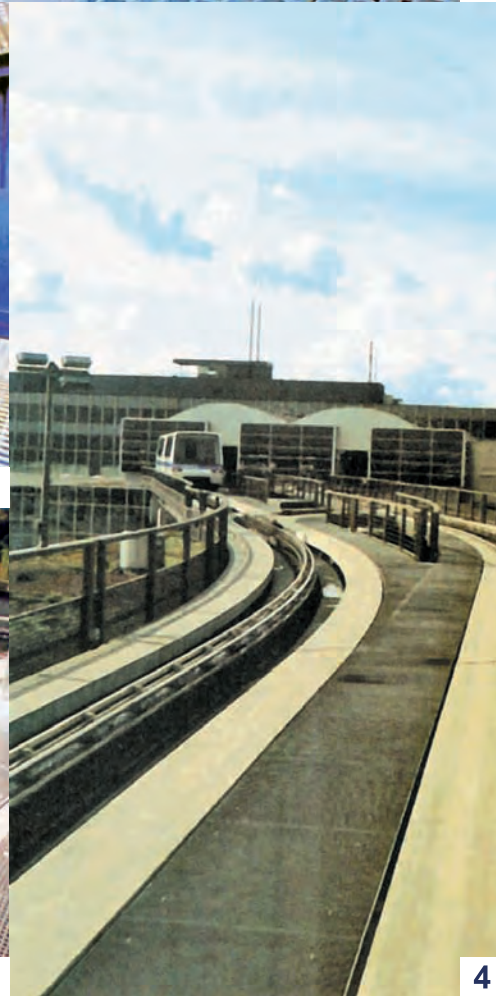
**2** Press welded grating as a trough cover at an oil drum warehouse in Cairo north power station



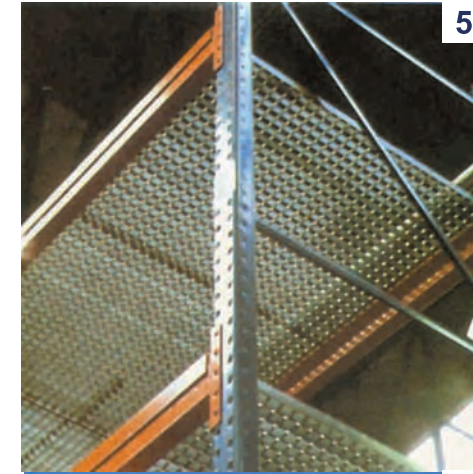
**3** Press welded grating used for a maintenance gangway and railing at Cairo airport



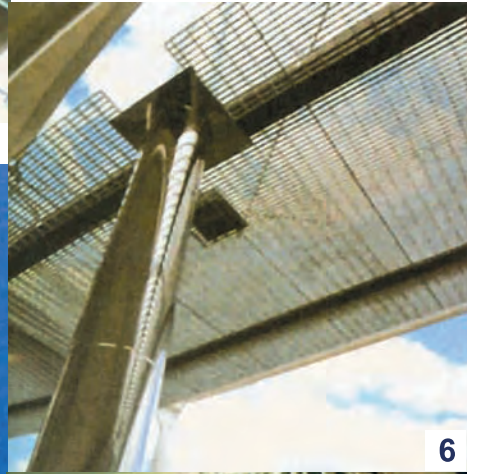
**4** Stainless steel anti-skid grating used to cover a spreader unit at a sewage treatment plant in General Motors



**5** Shelf grating with notched T-shaped banding at the Porsche High Rack Warehouse In American university



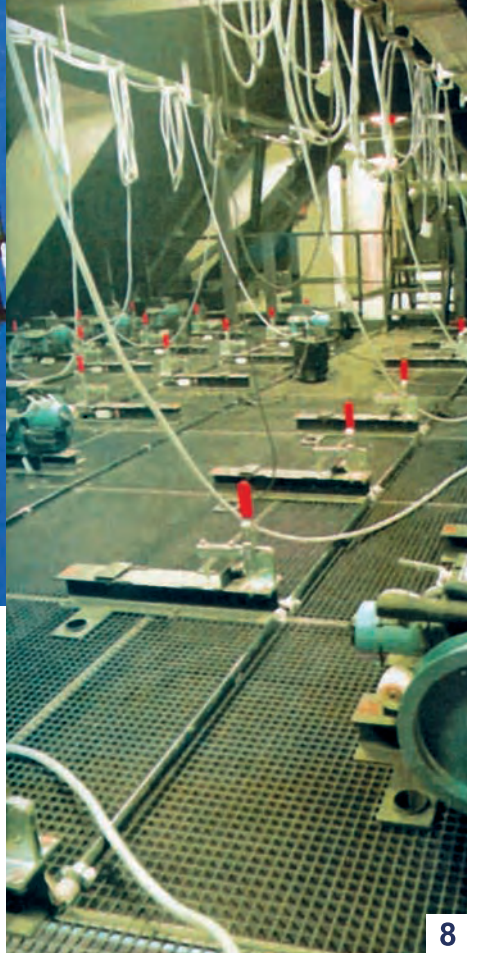
**6** Cairo Stadium



**7** Maintenance platforms for the Talk Tower in Lafarge (Egyptian Cement)

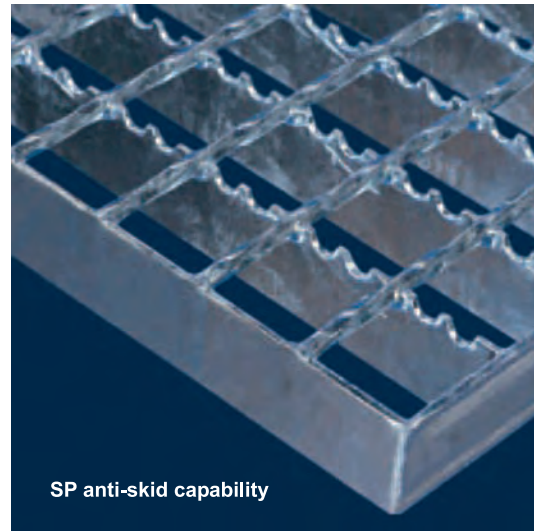


**8** Powder coated with press welded gratings used here to floor the stage at Mubrak Studios



**Anti-skid Gratings**

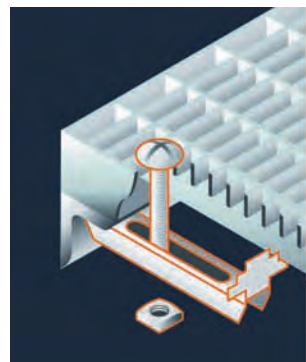
Normally all gratings have good non slip properties. However, they can be made even safer – particularly in areas where there is a risk of oil and grease spillages or when conditions are icy. Anti-skid gratings. So much safer, step by step.



**SP type anti-skid = R 10**  
 Bearing bars notched  
 Cross bars twisted

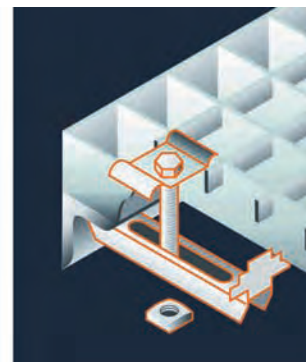
SP anti-skid capability

**Fastening and Safety Elements**



**Standard fastener**  
 for mesh width 30 x 10 mm

- cross head screw M8
- clamp lower part
- square nut

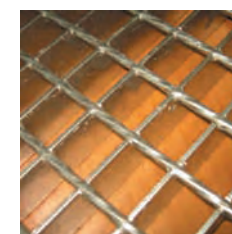
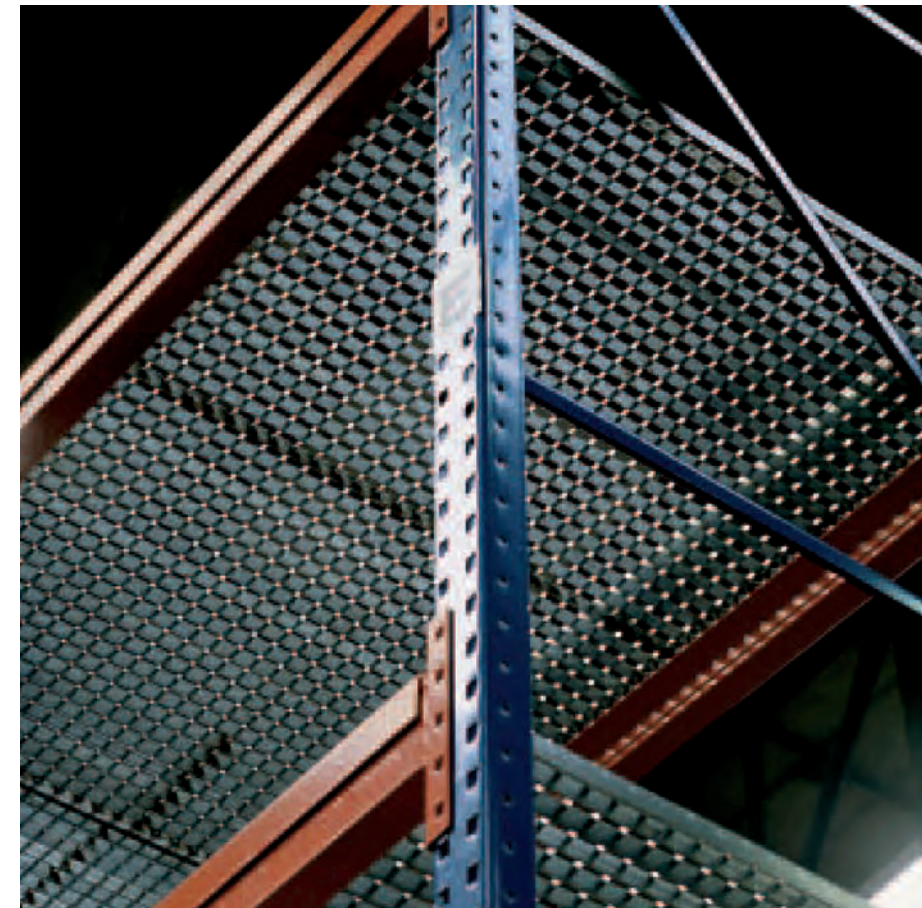


**Standard fastener**

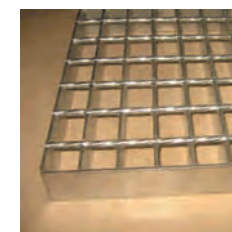
- clip upper part
- clamp lower part
- hexagon screw M8
- square nut

**Shelf Gratings**

Used in the construction of high rack systems, grating based shelves have key advantages compared to other shelf systems. Apart from the high statical values of grating one great benefit is that you can see what is on the shelves from underneath. Another significant benefit is that in the event of a fire starting the sprinkler system will be able to get water through to the seat of the fire. When it comes to producing the shelves, we suggest that angle collars or special notchings be specified: as they are useful as extra-high banding and stop things falling off the shelf.



**Angle collar**  
 Angles can be welded onto one or several edges. Angle height should be at least the same as the bearing bar.



**Notching**  
 Special notchings with extra-high banding in the deposit area.

The manufacture of steel staircases requires a high degree of flexibility and craftsmanship.

And so we integrate these factors with cost efficient production to offer you the customer solutions which are at once attractive and affordable.

We consider a solution successful only if it meets current regulations and if it contributes significantly to the overall aesthetic effect.

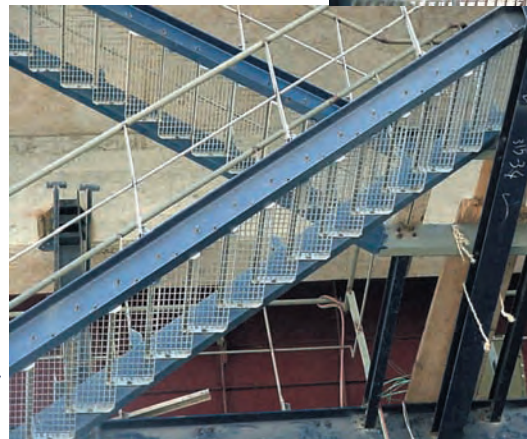
Spiral staircase Winding staircase Straight flight staircase



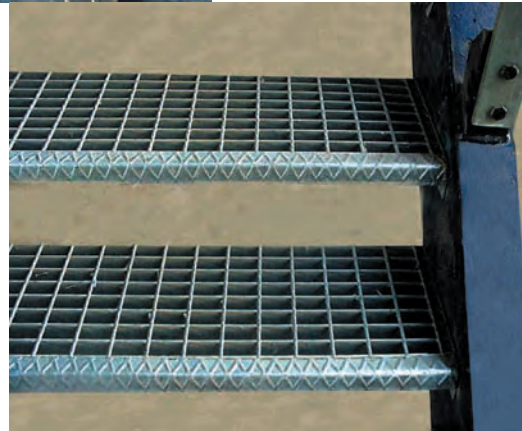
Golden Tex  
(Eng. Ahmed Arafa)



La Farage  
(Egyptian Cement)



Canadian University  
(6<sup>th</sup> of October)



Staircase users are probably more interested in the quality of the steps than say, the engineering skills that went into the manufacture.

Outdoors, it is advisable to use materials which can withstand variable weather conditions and provide the required anti-slip protection whether wet, icy or snowy.

Indoors, the designer or the developer has more opportunity to experiment with different designs and materials – all depending on taste and the architectural concept.

**Example 1:**

Grating 30 x 30 in the anti-skid design galvanised or stainless steel.

**Example 2:**

Durbar galvanised or stainless steel.

In addition to step tread design, the railing is important to the general appearance as well.

For example:

**A1**

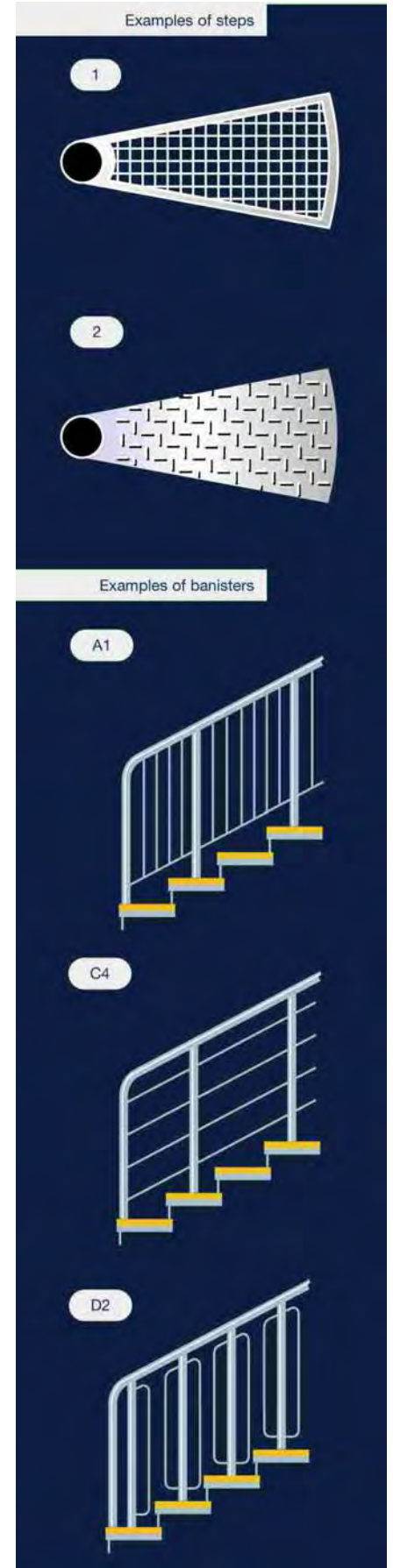
Handrail and posts made of steel tubing 42 or 48 mm in diameter, the binding bar of 30 x 8 mm flat bar and the rods of steel round bar 12 mm in diameter.

**C4**

Binding bar banister with handrail and posts made of steel tubing 42 or 48 mm in diameter with the binding bars made of steel tubing 26 mm in diameter or round bar 12 mm in diameter.

**D2**

Handrail made of steel tubing 42 mm in diameter, the posts as a design element of rhs 10 mm and rhs 25 mm.



### PRESS WELDED GRATING

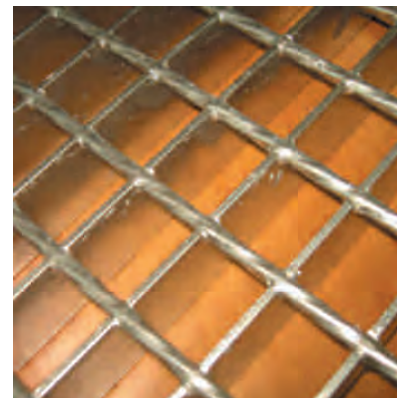
Meiser press welded gratings are produced from steel. The bearing bars and the twisted square cross bars are cut to grating size before the cross bars are locked into the bearing bars at a pressure of 1000 kN and – simultaneously– electrically welded at 2500 KVA. into one unit.

In combination with welded cross bars, non-attenuated bearing bars make for high torsion rigidity.

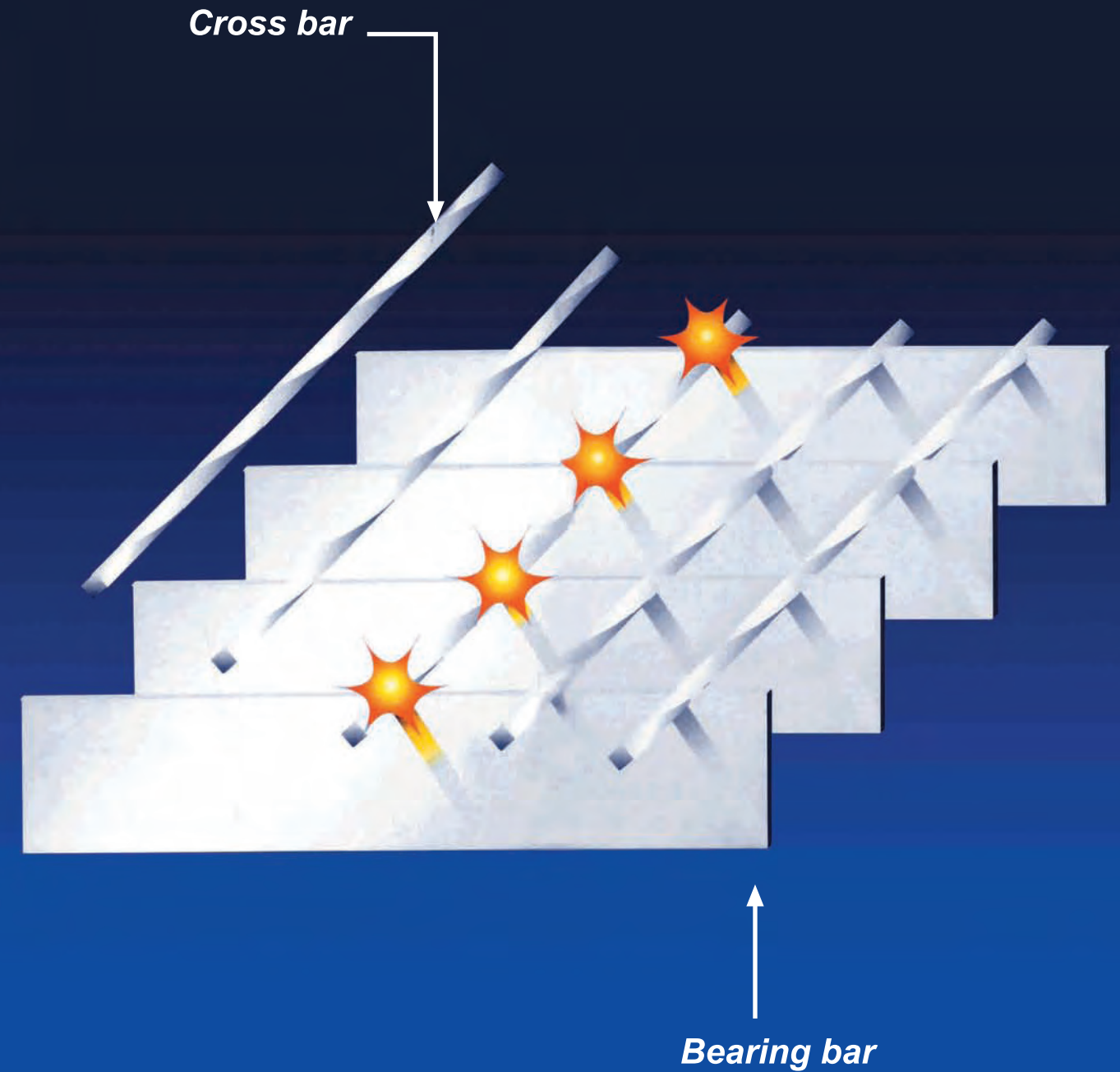
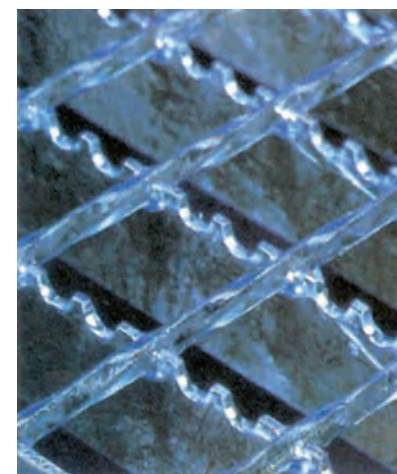
Press welded gratings are banded with flat bars which, as a rule, will have the same cross section as the bearing bar.

Once social form of press welded grating is offshore grating (O-SP-SS)

Due to the way bearing bars are profiled, press welded gratings have a much enhanced plain capability



Due to the way bearing bars are profiled, press welded gratings have a much enhanced anti-skid capability



Maximum cross bar length 1250 mm  
Maximum bearing bar length 3300 mm





JOB REFERENCES FOR GRATING ( CEMENT SECTOR )				
S	QTY(m²)	NAME OF COMPANY	SPECIFICATION	
1	7385	( Suez Cement Project )	* Pitch 30 x 50 mm * Bearing Bar 30 x 3 mm * Cross Bar 5 mm (twisted)	
2	6785	( Egyptian Cement Project ) Line1		
3	8135	( Egyptian Cement Project ) Line2		
4	3700	( Egyptian Cement Project ) Line3		
5	6700	( Egyptian Cement Project ) Line4 From Total QTY 6700 m2		
6	6700	( Egyptian Cement Project ) Line5 From Total QTY 6700 m2		
7	6800	( El Amria Cement Project ) Line1	* Pitch 30 x 50 mm * Bearing Bar 30 x 3 mm * Cross Bar 5 mm (twisted)	
8	6000	( Algeria Project ) Line 1	* Pitch 30 x 50 mm * Bearing Bar 30 x 3 mm * Cross Bar 5 mm (twisted)	
9	1732	Cement Company	* Pitch 30 x 50 mm * Bearing Bar 30 x 3 mm * Cross Bar 5 mm (twisted)	
10	1253	( Torah Cement Project )		
11	465	( Helwan Cement Project )		
12	6175	( Quna Cement Project )		
13	1800	El - Fahd Cement ( Domyeta Port )		
14	1100	Asiout Cement ( Cemex )	* Pitch 30 x 50 mm * Bearing Bar 30 x 3 mm * Cross Bar 5 mm (twisted)	
15	6800	SYRIAN CEMENT (LINE 1)		
16	2000	SINAI WHITE		
17	900	( Asiout Cement Project )		
18	12400	(LYBIA CEMENT PROJECT) LINE 1 - LINE 2	* Pitch 30 x 50 mm * Bearing Bar 30 x 3 mm * Cross Bar 5 mm (twisted)	
19	6000	( Algeria project ) line 1		
20	6000	( Algeria project ) line2		
21	6000	( Algeria project ) line 3		
22	6860	( Nigiria cement ) line 1		
23	6860	(CIBA-White Cement )		
24	6800	( FUJAIIRA )		
25	6800	( BAZIAN )		
26	7000	MISR BANI SWIF (LINE 1 )		* Pitch 30 x 50 mm * Bearing Bar 40 x 3 mm * Cross Bar 5 mm (twisted)
27	500	Tourah Cement.		* Pitch 30 x 38 mm * Bearing Bar 30 x 3 mm * Cross Bar 5 mm (twisted)

JOB REFERENCE FOR GRATING ( FERTILIZERS SECTOR )			
S	QTY	NAME OF COMPANY	SPECIFICATION
1	8335	Project (abu Qir - [petrochemical project ]	* Pitch 30 x 38 mm * Bearing bar 30 x 3 mm * Cross bar 5 mm ( twisted )
2	7230	( Eguptian Fertilizers ) first factory	
3	800	Project ( abou Madhy - petrochemical project )	
4	1000	Tradco company	
5	2000	Alex project ( Petrochemical Project )J & P	
6	3300	(cellulose project)	
7	7200	( Egyptian Fertilizers Co ) second factory	* Pitch 30 x 38 mm * Bearing bar 30 x 3 mm * Cross bar 5 mm ( twisted )
8	7150	( Helwan for Fertilizers )	
9	850	( Egyptian Fertilizers + Helwan Fertilizers + Alex Fertilizers )	
10	7200	Alex Fertilizers	
11	810	Project ( Suez Fertilizers )	
12	970	Company ( Abu Qir 3 )	
13	730	( Egyptian Fertilizer + Helwan Fertilizer + Alex )	
14	1250	( Alex Fertilizer )	
15	6380	( MOBCO )	
16	4500	( Al-Amonia Suez )	
17	13300	A Greum Fertilizer	
18	7500	Methanoul Fertilizer	
19	26500	Sorfert (algeria)	

JOB REFERENCES FOR GRATING ( ELECTRICITY SECTOR )			
S	QTY(m²)	NAME OF COMPANY	SPECIFICATION
1	1020	( Safaga Electricity Station)	* Pitch 30 x 38 mm * Bearing Bar 40 x 3 mm * Cross Bar 5 mm (twisted)
2	6600	( Port Said Station )	
3	385	( Eastern Branch ) ( El Temsah Station )	
4	250	Suez Electricity Station	
5	1500	( Samalout Electricity Station )	* Pitch 30 x 38 mm * Bearing Bar 40 x 3 mm * Cross Bar 5 mm (twisted)
6	2000	( Sidi Krir Electricity Station )	
7	6560	( Different Projects )	
8	1000	( Port Said Electricity Station - Civil )	* Pitch 30 x 38 mm * Bearing Bar 40 x 3 mm * Cross Bar 5 mm (twisted)
9	1000	( El Ain El Sokhnah Electricity Station - Civil )	
10	1700	( CAIRO NORTH POWER STATION) first stage	* Pitch 30 x 63.5 mm * Bearing Bar 32 x 5 mm serrated * Cross Bar 6 mm (twisted)
11	1000	( CAIRO NORTH POWER STATION) first stage	* Pitch 30 x 63.5 mm * Bearing Bar 30 x 4 mm serrated * Cross Bar 6 mm (twisted)
12	2500	( CAIRO NORTH POWER STATION)	* Pitch 30 x 63.5 mm * Bearing Bar 32 X 5 mm * Cross Bar 5 mm (twisted)
13	350	( ABO ZAABEL POWER STATION)	* Pitch 30 x 38 mm * Bearing Bar 30 X 3 mm * Cross Bar 5 mm (twisted)
14	700	WEST DELYA COMPANY ( KAFR ELDAWAR)	* Pitch 30 x 38 mm * Bearing Bar 30 X 3 mm * Cross Bar 5 mm (twisted)
15	300	( TOSKA POWER STATION )	
16	8100	( WEST NUBARIA POWER STATION)	* Pitch 41 x 63.5 mm
17	300	A.W FOR CONTRACTING	* Bearing Bar 38 X 5 mm
18	300	( GIZA POWER STATION)	* Cross Bar 6 mm (twisted)
19	200	( Talkha power station )	* Pitch 40 x 100 mm * Bearing Bar 38 X 5 mm * Cross Bar 6 mm (twisted)
20	1700	( Cairo North Power Station )	* Pitch 30 x 100 mm * Bearing Bar 38 X 5 mm * Cross Bar 6 mm (twisted)
21	2100	( El Korimat Power Station )	* Pitch 30 x 100 mm * Bearing Bar 38 X 5 mm * Cross Bar 6 mm (twisted)
22	4200	( El - Tebeen Power Station )	* Pitch 30 x 100 mm * Bearing Bar 38 x 5 mm * Cross Bar 6 mm (twisted)
23	4000	( Nobaria Power Station 3 )	* Pitch 30 x 100 mm * Bearing Bar 38 x 5 mm * Cross Bar 6 mm (twisted)
24	4000	( El ATF Power Station )	* Pitch 30 x 100 mm
25	11000	Abou Keer Power Station	* Bearing Bar 38 x 5 mm
26	4000	Ain Sokhna Power Station	* Cross Bar 6 mm (twisted)

JOB REFERENCES FOR GRATING ( CARS & CARS PAINTING SECTOR )			
S	QTY	NAME OF COMPANY	SPECIFICATION
1	390	Ega Mercedes Company ( M.C.V.Factory - New Salhya)	* Pitch 30 x 38 mm * Bearing Bar 30 x 3 mm * Cross Bar 5 mm (twisted)
2	400	Arab American Cars Company	* Pitch 30 x 50 mm * Bearing Bar 30 x 3 mm * Cross Bar 5 mm (twisted)
3	200	Mia Company	* Pitch 30 x 50 mm * Bearing Bar 30 x 3 mm * Cross Bar 5 mm (twisted)

JOB REFERENCES FOR GRATING ( CONSTRUCTION SECTOR )			
S	QTY(m²)	NAME OF COMPANY	SPECIFICATION
1	2800	( The National Company for Iron & Steel )	* Pitch 30 x 38 mm * Bearing Bar 30 x 3 mm * Cross Bar 5 mm (twisted)
2	560	( El Sadat City Factory )	* Pitch 30 x 38 mm * Bearing Bar 30 x 3 mm * Cross Bar 5 mm (twisted)
3	800	( Drainage Project - El Gabal El Asfar )	* Pitch 30 x 50 mm * Bearing Bar 30 x 3 mm * Cross Bar 5 mm (twisted)
4	2400	( Mubarak Stadium )	* Pitch 30 x 38 mm * Bearing Bar 40 x 3 mm * Cross Bar 5 mm (twisted)
5	200	( El Ain El Sokhna Port )	* Pitch 30 x 50 mm * Bearing Bar 40 x 3 mm * Cross Bar 5 mm (twisted)
6	5000	( Different Projects )	* Pitch 30 x 38 mm * Bearing Bar 30 x 3 mm * Cross Bar 5 mm (twisted)
7	1200	( Ismalia Drainage )	* Pitch 30 x 38 mm
8	1400	El Gabal El Asfar Drainage - Contract 16 )	* Bearing Bar 30 x 3 mm * Cross Bar 5 mm (twisted)
9	385	( Asuit Towers )	* Pitch 30 x 50 mm * Bearing Bar 30 x 3 mm * Cross Bar 5 mm (twisted)
10	2000	The American Company for Steel Industry ( Bashy's Sons )	* Pitch 30 x 38 mm * Bearing Bar 50 x 5 mm * Cross Bar 5 mm (twisted)
11	1020	( Different Projects )	* Pitch 30 x 38 mm
12	5000	( Different Projects )	* Bearing Bar 40 x 3 mm * Cross Bar 5 mm (twisted)
13	1500	( El Sweedy )	* Pitch 30 x 50 mm * Bearing Bar 25 x 3 mm * Cross Bar 5 mm (twisted)
14	600	( El Ain El Sokhna Port )	* Pitch 30 x 38mm
15	400	N . C . C .	* Bearing Bar 30 x 3 mm * Cross Bar 5 mm (twisted)
16	2350	SUKARI GOLD MINES	* Pitch 30 x 50 mm * Bearing Bar 32 x 5 mm * Cross Bar 6 mm (twisted)

JOB REFERENCES FOR GRATING ( PETROL & DRILLING SECTOR )			
S	QTY(m²)	NAME OF COMPANY	SPECIFICATION
1	1200	Kh. Petroleum Company	Mesh 30 x 30 mm BB 30 X 3 mm Cross Bar 5 mm ( twisted )
2	2000	( Gasco Project )	Mesh 30 x 50 mm BB 40 X 3 mm Cross Bar 5 mm ( twisted )
3	970	M. ( Abou Qir 3 + 600 stairs )	Mesh 30 x 30 mm BB 30 X 3 mm Cross Bar 5 mm ( twisted )
4	800	( Abou Madhy Extensions )	Mesh 34 x 38 mm BB 40 X 3 mm Cross Bar 5 mm ( twisted )
5	12250	G. for Petroleum	Mesh 30 x 63 mm BB 25 X 4 mm Cross Bar 7 mm ( twisted )
6	18600	EDC	Mesh 30 x 63mm BB 30 X 4 mm & 29X5 mm (serrated) Cross Bar 7 mm ( twisted )
7	750	Chinese Drilling Company	Mesh 30 x 63 mm BB 30 X 3 mm( serrated ) Cross Bar 5 mm ( twisted )
8	3200	Abo rdees. & Port Said	Mesh 30 x 50 mm BB 30 X 4 mm ( Serrated ) Cross Bar 6 mm ( Twisted )
9	590	Order from Apache Petroleum	Mesh 30 x 63 mm BB 30 X 3 mm ( serrated ) Cross Bar 5 mm ( twisted )
10	200	El Haram for Drilling	Mesh 30 x 50 mm BB 25 X 5 mm ( serrated ) Cross Bar 5 mm ( twisted )

JOB REFERENCES FOR GRATING ( GAS SECTOR )			
S	QTY(m²)	NAME OF COMPANY	SPECIFICATION
1	8800 M2	( L.N.G EDCO )	* Pitch 30 x 63.5 mm * Bearing Bar 30 x 5 mm(SERRATED) * Cross Bar 6 mm (twisted)
2	2500 M2	( L.N.G DAMIETTA )	* Pitch 30 x 63.5 mm * Bearing Bar 25 x 5 mm(SERRATED) * Cross Bar 6 mm (twisted)
3	450 M2	U G D PORT SAID	* Pitch 30 x 63.5 mm * Bearing Bar 30 x 5 mm (SERRATED) * Cross Bar 5 mm (twisted)
4	440 M2	U G D DAMIETTA	* Pitch 30 x 63.5 mm * Bearing Bar 25 x 5 mm (SERRATED) * Cross Bar 5 mm (twisted)
5	1557 M2	BURULLUS GAZ CO.	* Pitch 30 x 100 mm * Bearing Bar 25 x 3 mm (SERRATED) * Cross Bar 8 mm (twisted)

To keep as near to our customers as possible, we maintain our own production locations, branches and agencies in several European countries.

One of the tasks at these locations is, not least, to make sure that the Meiser service is well organised.

Apart from its two production locations in Germany, Meiser operates in Belgium, Hungary and Egypt.

There are agencies in Italy, Spain, Switzerland, Austria and Scandinavia.

There are branches in Britain, the Netherlands, France, Rumania, and Malaysia.



**HADY MEISER EGYPT**  
**For Steel Grating S.A.E.**

6, Ramo Buildings / Nasr Road  
Arab Republic of Egypt

*Head Office*

Tel.: (+202) 2415 1485  
: (+202) 2291 0851  
Fax: (+202) 2291 0702

*Factories / Sales*

*Sherouk Industrial zone,  
El-Khanka, Qaliobia, Egypt.*  
Tel.: (+202) 4987 1160  
: (+202) 4987 1161  
Fax: (+202) 4467 9899  
Mobile: (+2010) 172 6135  
E-mail: [mmeiser@link.net](mailto:mmeiser@link.net)  
[trabia\\_meiser@yahoo.com](mailto:trabia_meiser@yahoo.com)

